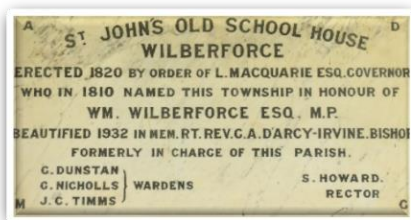


Macquarie Schoolhouse Bicentennial

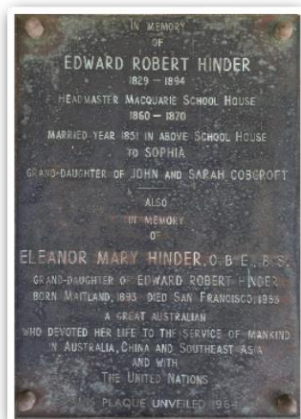
Newsletter - Issue 3 – February 2020

THE MACQUARIE SCHOOLHOUSE PLAQUES

As with many historic buildings, the Schoolhouse is home to many plaques, to both commemorate the building itself and also remember the people involved in its history. They are a reminder of the wonderful history attached to this building.



The first plaque (above) details the building date of the Schoolhouse as well as the naming of Wilberforce. It also acknowledges the work undertaken in 1932 by the church.



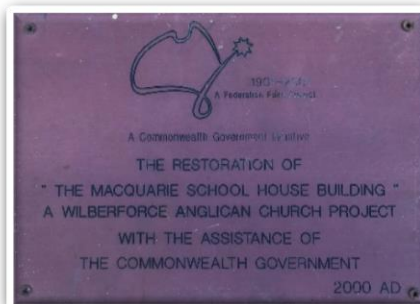
The second plaque placed on the building is in memory of Edward Robert Hinder, the third school-

master. It gives details on his life, especially relating to the Schoolhouse. It also acknowledges his granddaughter, Eleanor Mary Hinder. This plaque was placed in 1964.

The third plaque (below) was unveiled at the 150th Anniversary of the Schoolhouse in 1970. It lists all schoolmasters and their years of service.



The final plaque acknowledges the restoration project that took place in 2000.



These images are available to view in more detail on our website listed below.

Alicia Bates

Coordinator – Macquarie Schoolhouse Bicentennial

GET INVOLVED

Are you interested in the local history of Wilberforce or the Hawkesbury generally?

Did your ancestors attend school at the Macquarie Schoolhouse?

Were your ancestors involved in the Sunday congregation that met at the Macquarie Schoolhouse?

Was your family involved in the Wilberforce community?

Are you a descendant of one of a Schoolmaster or Minister?

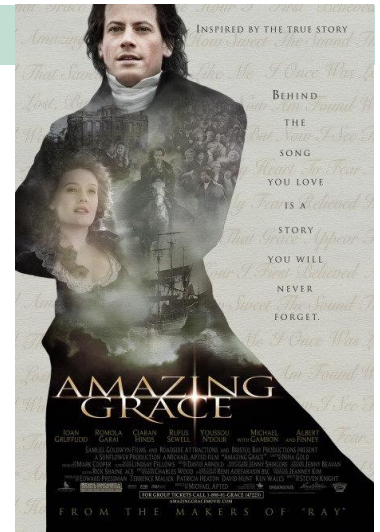
We would love to hear from you!

Please get in contact with the team on our details in this newsletter

AMAZING GRACE – THE MOVIE

As a part of our weekend of events to celebrate the bicentennial of the Macquarie Schoolhouse, we will be screening the movie, *Amazing Grace*, on the night of Saturday 3 October. It is the story of the town's namesake, William Wilberforce, and his battle through the English Parliament for the abolishment of slavery. The movie is a free screening and all are welcome. There will be snacks and drinks available for purchase.

(Rated PG for mild language and thematic material involving slavery)



WILBERFORCE CEMETERY

The Wilberforce Cemetery is a part of the precinct that Governor Macquarie had detailed when he crossed the river for a second time in 1811. The first burials recorded were of James Hamilton and Joseph Ware, who drowned on 12 December 1811. The information of headstones has been made available online, with many photographs and family trees attached. For more information, visit www.austcemindex.com

SCHOOLMASTER SPOTLIGHT – JOHN BANFIELD (1887-1880)

John Banfield was born in 1842 in Morpeth, New South Wales. His parents, Thomas and Margaret, were assisted immigrants who came from Ireland to Australia in 1832. John married Sarah in Morpeth in 1865 and they had 4 children before taking up his post of schoolmaster at the Macquarie Schoolhouse. During his time in Wilberforce, they had another 2 children, before moving on. They ended up back in the Maitland district with their family. John Banfield passed away in 1927, at the age of 85.

SPONSORS



We have different levels of sponsorship, there will be one that suits you. Contact the team through our website to organise it.

Macquarie Schoolhouse

43 Macquarie Road, Wilberforce

www.macquarieschoolhouse.com.au

admin@macquarieschoolhouse.com.au

www.facebook.com/macquarieschoolhouse

Descendants of
William Pashington Terry Gow (c.1795-1872)
are invited to attend a
Gow Family Gathering
Sunday 4 October 2020
Macquarie Schoolhouse
St John's Anglican Church
43 Macquarie Road Wilberforce NSW

For further details email: wptgowdescendants@gmail.com

After arriving as a convict in 1817, William went on to become a schoolmaster, farmer and father of 10.



**Look out for our next
Newsletter. Due out in
May 2020**